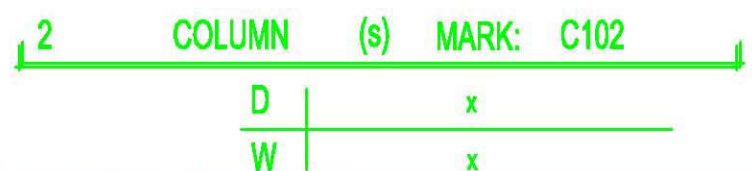
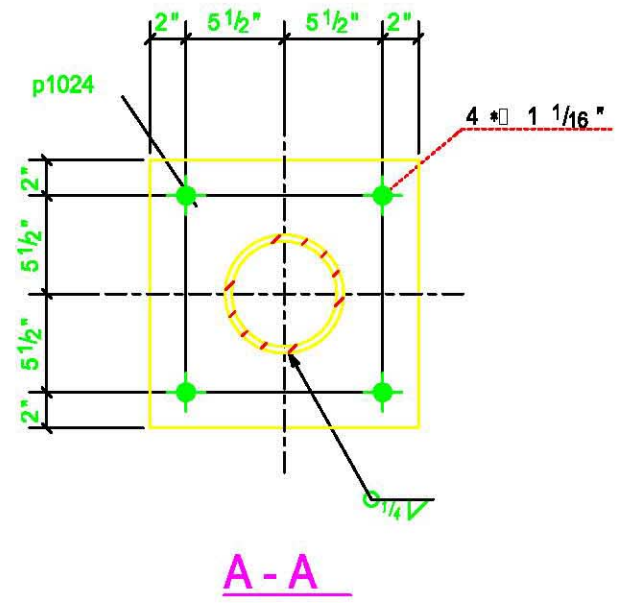
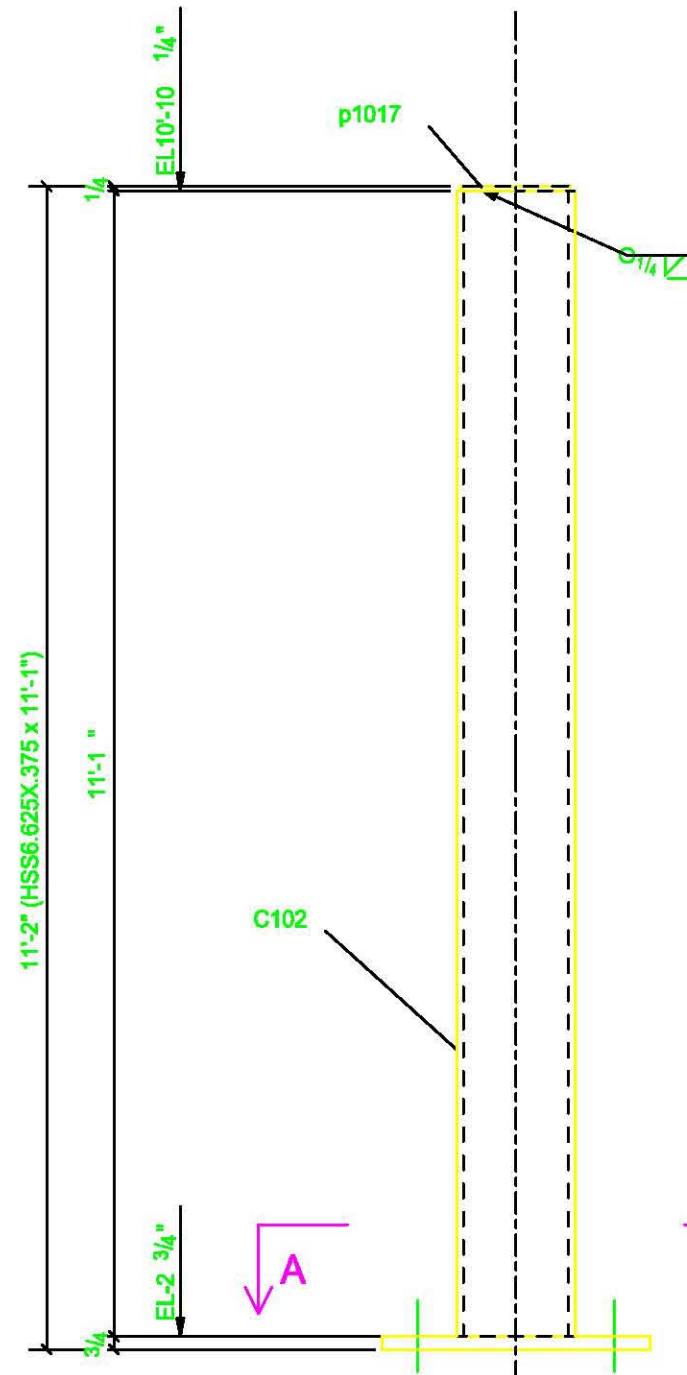


LOCATION			
Mark	Quant.	T.O.S.	Grid ref.
C102	1	10'-10"1/4	2/A
C102	1	10'-10"1/4	2/C

BILL OF MATERIAL									
ASM MARK	SHIPPING MARK	ASSY MARK	No. REQ'D	DESCRIPTION	LENGTH	GRADE	WEIGHT	REMARKS	
	C102		2						
		C102	2	HSS6.625X.375	11'-1"	350W	554.4	class C	
		p1017	2	PL1/4X8 1/8	0'-6 1/8"	300W	4.1		
		p1024	2	PL3/4X15	1'-3"	300W	95.7		
TOTAL=							654.3		

BOLT SUMMARY - QTY'S ARE FOR ONE ASSEMBLY ONLY						
Assembly	No	Diam	Length	Workshop/Site	Grade	Remarks



▲	JULY 26 2006	ISSUED FOR APPROVAL
▲	JULY 10 2006	ISSUED FOR APPROVAL
SHOP PAINT:		
C102		
NO BACK CHARGES WILL BE ACCEPTED WITHOUT PRIOR AUTHORIZATION IN WRITING		
NOTE:		
COAT PRIMER		



<b>BELAIR FABRICATION LTD.</b> 1667 COLUMBIA STREET NORTH VANCOUVER, B.C. V7J 1A5 TEL: (604) 924-0845 FAX: (604) 924-0846		<b>PACIFIC</b> Detailing Inc. TEL: (604) 924-0049 FAX: (604) 924-0846	
JOB NAME & LOCATION: <b>SFU TRANSIT SHELTER</b> BURNABY CAMPUS BURNABY, B. C. V5A 1S6		ARCH: The Colborne Architectural Gro. 100 West Pender St. Vancouver, B.C. ENGR: JM Engineering 318 Homer St. Vancouver, B.C. CONTR: HOLACO CONSTRUCTION LTD.	
REF: DRAWN BY: SHZ 07/04/2006 SHEET TITLE: COLUMN		CHECKED BY: LJK 07/27/2006 JOB NO: KW-0014 DWG. NO: C102	

MATERIAL: 350W U.N.O.	SURF. PREP:
BOLT: A325 U.N.O.	WELD: F00K
HOLE SIZE: # 18 U.N.O.	ELECTRODE: 100